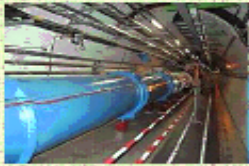


Pression et température

LHC



$P = 10^{-13}$ bar

Atmosphère terrestre



B.Pascal
1623-1662

$P = 1$ bar

Enclumes



$P = 10^7$ bar

Atomes froids



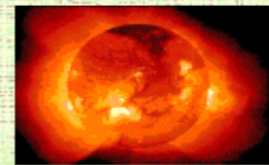
$T = 10^{-9}$ K



Galilée
1564-1642

$T = 300$ K

Soleil



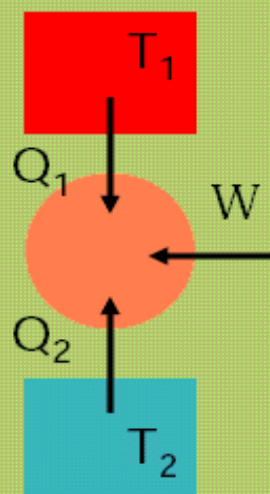
$T = 10^7$ K

Les principes de la thermodynamique

Machines dithermes cycliques



Sadi Carnot
(1796-1832)



$$Q_1 + Q_2 + W = 0$$

$$\frac{Q_1}{T_1} + \frac{Q_2}{T_2} \leq 0$$

